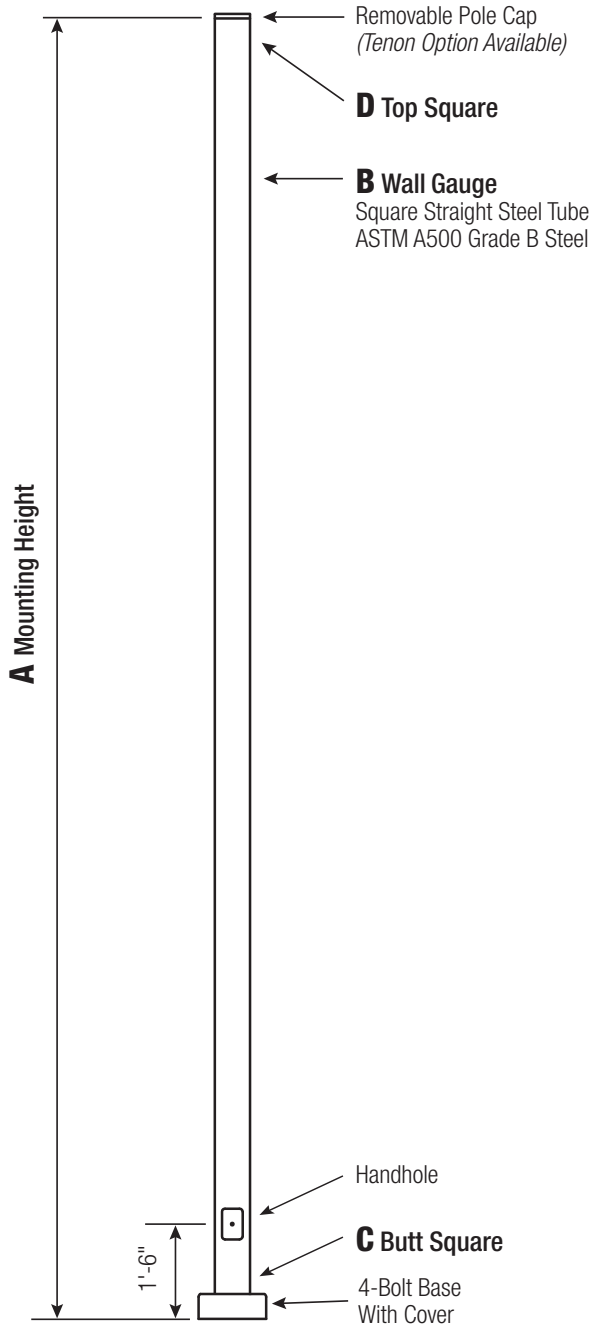


SSS

Square Straight Steel Pole No Arm — 4-Bolt Base



Powder Coated, Galvanized or Powder Coated over Galvanized Finish Per Customer Specification.

C BUTT Sq.	D TOP Sq.	F BOLT CIR. DIA.	G BASE Sq.	H BOLT PROJ.	I BOLT SIZE
4 (11 Gauge)	4	8 - 9	8	3.75	.75 x 17 x 3
4 (7 Gauge)	4	8 - 9	8	3.75	.75 x 30 x 3
5 (11 Gauge)*	5	10 - 12	11	3.75	.75 x 30 x 3
5 (7 Gauge)	5	10 - 12	11	4.875	1 x 36 x 4
6	6	11 - 13	12.5	4.875	1 x 36 x 4

*Requires the use of oversized washers (provided).

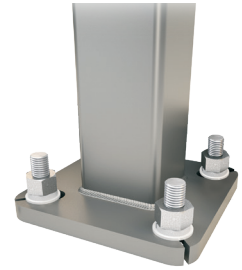
Dimensions in Inches

Pole

Pole shaft shall be weldable-grade, cold-rolled, commercial quality carbon steel tubing conforming to ASTM A500 Grade B. Options include 11 gauge and 7 gauge. All welds shall conform to AWS D1.1 using ER70S-6 electrodes.

Base Style

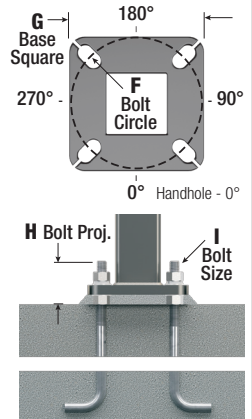
4-Bolt Steel Plate Base Flange of fabricated hot rolled carbon steel conforming to ASTM A36 or equivalent (36 ksi minimum yield) with 2-piece Base Cover and attaching hardware.



Anchorage

Anchorage Kit will include four (4) L-shaped Steel Anchor Bolts conforming to AASHTO M314-90 Grade 55. Ten inches (10") of threaded end will be galvanized per ASTM A153.

Kits will contain eight (8) Hex Nuts, four (4) Lock Washers, and eight (8) Flat Washers (all components Galvanized Steel). A paper bolt circle template will be provided.



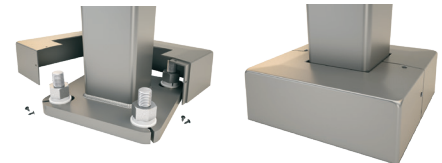
Handhole

Reinforced, 3" x 5" Handhole with cover, stainless steel screw and backbar. A grounding provision incorporating a tapped 1/2"-13NC hole will be provided.



Base Cover

Square ABS plastic Base Covers are standard on all SSS poles specified in BA-Black, BM-Dark Bronze and BH-White. SSS poles specified in all other colors will be manufactured of metal materials. Custom specification of SSS square metal style Base Covers in BA, BM and BH powder coated finishes is available.



Vibration Damper

If determined necessary,, or if specified by the customer, a first and/or second mode vibration damper will be provided.

WARNING: Do not install light pole without luminaire.



Solar Lighting International®, Inc.

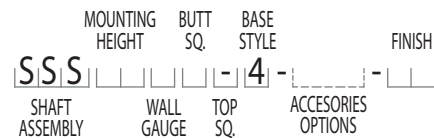
Phone +1 803-233-3461 | www.solarlightingintl.com

The Name Solar Lighting International® is a Registered Trademark.

A Mtg. Hgt.	B WALL GAUGE	C BUTT SQ.	TOTAL LUM. WEIGHT	MAXIMUM EPA						CATALOG NUMBER
				90	100	110	120	130	140	
10	11	4	320	25.2	20.0	18.6	15.3	12.7	10.6	SSS10B4-4**
12	11	4	285	20.6	16.2	14.9	12.1	9.9	8.2	SSS12B4-4**
14	11	4	255	17.0	13.2	12.1	9.7	7.8	6.3	SSS14B4-4**
15	11	4	245	15.5	11.9	10.9	8.6	6.8	5.4	SSS15B4-4**
15	7	4	305	23.4	18.4	17.0	13.8	11.4	9.4	SSS15D4-4**
16	11	4	235	14.0	10.7	9.7	7.6	5.9	4.6	SSS16B4-4**
16	7	4	290	21.5	16.8	15.5	12.5	10.2	8.4	SSS16D4-4**
18	11	4	215	11.3	8.4	7.6	5.7	4.3	3.2	SSS18B4-4**
18	7	4	265	18.0	13.9	12.8	10.2	8.2	6.6	SSS18D4-4**
20	11	4	200	9.1	6.5	5.8	4.2	2.9	1.9	SSS20B4-4**
20	11	5	235	14.1	10.3	9.2	6.8	4.9	3.4	SSS20B5-4**
20	7	4	240	15.1	11.5	10.5	8.2	6.5	5.0	SSS20D4-4**
20	7	5	330	26.3	20.3	18.6	14.8	11.9	9.6	SSS20D5-4**
22	11	4	200	7.2	4.9	4.2	2.8	1.7	0.8	SSS22B4-4**
22	11	5	215	11.4	8.0	7.1	4.9	3.2	1.9	SSS22B5-4**
22	7	4	225	12.7	9.5	8.6	6.6	5.0	3.7	SSS22D4-4**
22	7	5	300	22.4	17.1	15.6	12.2	9.6	7.5	SSS22D5-4**
25	11	4	200	4.7	2.8	2.2	1.0	-	-	SSS25B4-4**
25	11	5	200	8.0	5.1	4.3	2.4	1.0	-	SSS25B5-4**
25	7	4	205	9.7	6.9	6.2	4.4	3.1	2.0	SSS25D4-4**
25	7	5	260	17.7	13.2	11.9	9.0	6.7	4.9	SSS25D5-4**
28	11	4	200	2.6	1.0	-	-	-	-	SSS28B4-4**
28	11	5	200	5.1	2.6	1.9	-	-	-	SSS28B5-4**
28	7	4	200	7.1	4.8	4.1	2.6	1.5	-	SSS28D4-4**
28	7	5	235	13.9	9.9	8.8	6.3	4.3	2.7	SSS28D5-4**
30	11	5	200	3.4	1.1	-	-	-	-	SSS30B5-4**
30	7	4	200	5.6	3.5	2.9	1.6	-	-	SSS30D4-4**
30	7	5	215	11.7	8.0	7.0	4.7	2.9	1.5	SSS30D5-4**
30	7	6	275	19.2	13.7	12.2	8.7	5.9	3.8	SSS30D6-4**
35	7	5	200	6.9	4.0	3.1	1.2	-	-	SSS35D5-4**
35	7	6	220	12.6	8.0	6.8	3.9	1.6	-	SSS35D6-4**
39	7	6	200	8.2	4.2	3.1	0.6	-	-	SSS39D6-4**

Catalog Number System

The catalog number for these poles utilizes the following identification system.



Catalog Number Example -

SSS 20 D 5 - 4 - BA

Square Straight Steel, 20' Mounting Height, 7 Gauge, 5" Butt Square, No Taper, 4-Bolt Base, Black Powder Coat Finish.

EPA Notes:

Effective Projected Area (EPA) in square feet. EPA's calculated using wind velocity (mph) indicated in accordance with 2009 AASHTO LTS-5 using a 25-year design life. Maximum EPA is based on the luminaire weight shown. Increased luminaire weight may reduce the maximum EPA. If weight is exceeded, or if other design life or code is required, please consult the factory.

Mounting Options

Side Drill Mount

Includes removable pole cap.

NOTE: A luminaire drilling template must be supplied at time of order.

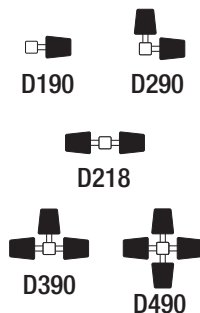


Tenon Mount

For Tenon Mount applications specify both Tenon diameter and length.



Drill Mount Options

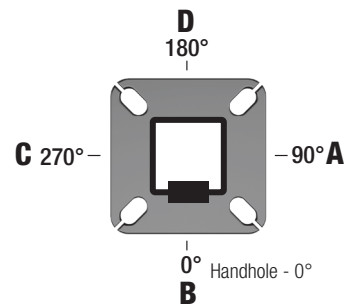


Electrical Box



Note: GFI Options must be specified in Accessories.

Pole Orientation



SSS- SQUARE STRAIGHT STEEL POLE	HEIGHT	GAUGE	BUTT SQ.	TOP SQ.	BASE STYLE	MOUNTING OPTIONS	ELECTRICAL BOX*	ACCESSORIES/OPTIONS*	FINISH
	10 = 10' 12 = 12' 14 = 14' 16 = 16' 18 = 18' 20 = 20' 22 = 22' 25 = 25' 28 = 28' 30 = 30' 35 = 35' 39 = 39'	B = 11 Gauge D = 7 Gauge	4 = 4" 5 = 5" 6 = 6"	"-" = No Taper	4 = 4-Bolt Base	DRILL MOUNT D000 - No Drilling D190 - Std. "A" D290 - Std. "A" & "D" D218 - Std. "A" & "C" D390 - Std. "A", "D", & "C" D490 - Std. "A", "B", "C", & "D" DCUS - Custom* TENON T204 - 2-3/8" O.D. x 4" T304 - 2-7/8" O.D. x 4" T356 - 3-1/2" O.D. x 6" T406 - 4" O.D. x 6" TCUS - Custom Tenon** * Specify Number and Orientation ** Specify O.D. and Height	FA - 30" Up, "D" FB - 30" Up, "B" FC - 30" Up, "A" FD - 30" Up, "C" FE - 36" Up, "D" FF - 36" Up, "B" FG - 36" Up, "A" FH - 36" Up, "C" FI - 24" Up, "D" FK - 24" Up, "A" FL - 24" Up, "C" FZ - Custom** * GFI Receptacle Options Available (Specify in Accessories) ** Specify Height and Orientation	C12 - Threaded 1/2" Coupling** C34 - Threaded 3/4" Coupling** C10 - Threaded 1" Coupling** EHH - Extra Handhole** GF1 - Duplex GFI Receptacle (WR) with Cover GF2 - Duplex GFI (WR) with In-Use Cover LAB - Less Anchor Bolts LPC - Less Pole Cap PAB - Pre-shipped Anchor Bolts VD1 - Vib. Damper - 1st Mode VD2 - Vib. Damper - 2nd Mode * Add all that apply (Example: CPL-LAB-VD1) ** Specify Location	POWDER COAT COLORS BA - Black Powder Coat BH - White Powder Coat BM - Dark Bronze Powder Coat BV - Dark Green Powder Coat GC - Gray Powder Coat XX - Special Colors* GALVANIZED 1Q - Galvanized Only 1C - Black PC Over Galv. 1D - White PC Over Galv. 1B - D. Bronze PC Over Galv. 1Y - D. Green PC Over Galv. 1J - Gray PC Over Galv. XX - Special PC Over Galv.* * Provide RAL # or Sample Color Chip