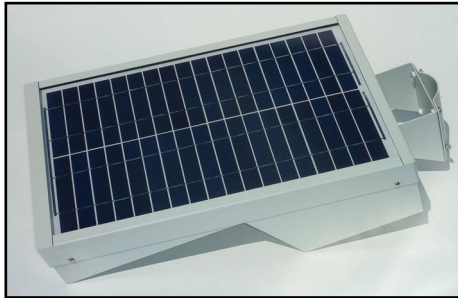


INTELLIGENT SOLAR LIGHTING

for public parks, walking paths, bicycle paths, bus shelters and more...



The SLI solar path fixture is the next generation intelligent outdoor lighting system. It combines latest LED lighting technology, intelligent motion sensor, solar module and GEL cell battery into a compact stylish housing. There is no external solar module or battery box to install.

This system is designed to operate at dusk for two hours, after which the motion sensor activates the luminaire when movement is detected in a 25 feet radius. This mode provides greater security of the premises. In addition, the intelligent motion sensor activates the luminaire at dusk or night only, increasing battery lifespan.

Our fixture is technically and economically an ideal lighting solution for many applications.

FEATURES

- Solar powered outdoor lighting;
- High lumen output;
- 50 000 hours maintenance free LED operation;
- High lumen/watt efficiency;
- No power cables are needed;
- Uses GEL cell latest battery technology, designed for outdoor harsh environment;
- Easy and safe installation with key switch;
- Compact and lightweight;
- Side pole or top of pole mounting option;
- Strong, stylish, weather-proof housing design;
- Vandal resistant;
- Installation height from 12 to 16 feet.

APPLICATIONS

- Public parks;
 - Walking paths;
 - Bicycle paths;
 - Boardwalks;
 - Bus stations;
 - Parking lots;
 - Golf Courses;
 - Remote areas.
-

INTELLIGENT SOLAR LIGHTING

for public parks, walking paths, bicycle paths, bus shelters and more...

INTELLIGENT SOLAR LIGHTING			
TECHNICAL SPECIFICATIONS	ALL IN ONE		
Lumen output (lm)	705lm	1410lm	2115lm*
Equivalent Power Output - Incandescent (W)	115W	230W	345W
Actual Power Consumption (W)	6.5W	13W	19.5W
Color temperature (°K)	Options : 4100°K / 5650°K		
CRI (Color Rendering Index)	70		
LED lifespan	50 000 hours		
Motion detector radius	25 feet (7.5m)		
Motion detector time delay	Adjustable : 30 seconds to 30 minutes		
Recommended mounting height	12 to 16 feet (4 à 5m)		
Recommended spacing factor	2.7 x Mounting Height		
Mounting type	Options : Side pole / Top of pole / End of pole		
Battery type	Deep Cycle - GEL cell		
Battery Overcharge/Discharge protection	YES		
Operating Time per day (northern regions)	6 hours	3 hours	2 hours
Operating Time per day (southern regions)	8 hours	4 hours	3 hours
Operation temperature range	-30°C +70°C		
Body material	Galvanized Steel		
Coating	Polyester Powder Coating		
Dimensions - LxDxH - in (mm)	22" x 14" x 5" (558 x 364 x 125)		
Unit Weight - Lbs (Kg)	38 lbs (17 Kg)		
Warranty	2 years		

Illuminated Surface (Mounting height = 12 feet)	Dimensions - ft (m)	Lumen (lm)	Illuminance (lux)
	20' X 20' (6m x 6m)	705	19
	20' X 20' (6m x 6m)	1410	38
	20' X 20' (6m x 6m)	2115	57
	30' X 30' (9m x 9m)	705	8
	30' X 30' (9m x 9m)	1410	17
	30' X 30' (9m x 9m)	2115	25
	40' X 40' (12m x 20m)	705	5
	40' X 40' (12m x 20m)	1410	9
	40' X 40' (12m x 20m)	2115	14

* 2115 lumens version works on motion detection only.